

VISUAL REFERENCE GUIDE



ÉDIFICE WILDER - Espace danse © David Boyer

Tangente
1435, rue De Bleury, Montréal

The following guide introduces various visual markers of ÉDIFICE WILDER – Espace danse and its theatre spaces. It was conceived to familiarize audience members with the building.

If you need more information, or wish to book a pre-show visit, please contact the box-office via e-mail billetterie@tangentedanse.ca or phone 514-525-1500.

CONTENTS

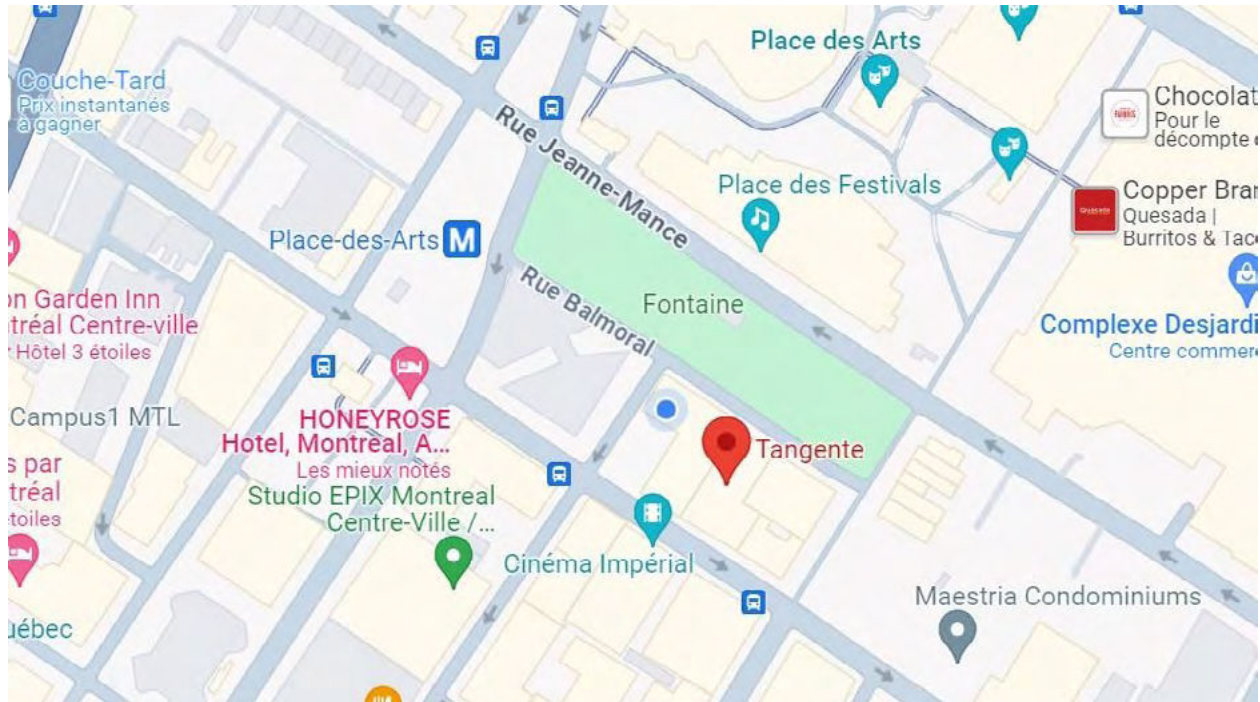
- 03 TANGENTE: WHO ARE WE?
- 04 GETTING TO TANGENTE
- 07 INSIDE THE BUILDING
- 09 TANGENTE'S FRONT-OF-HOUSE TEAM
- 10 THE CAFÉ-BAR
- 11 ESPACE ORANGE
- 13 WASHROOMS AND COAT CHECK—1ST FLOOR
- 15 ESPACE VERT
- 17 WASHROOMS—BASEMENT

TANGENTE : WHO ARE WE?

The first organization to specialize in dance presentation in Québec, Tangente (est. 1980) champions emerging choreographers and offers contemporary dance programming from September to May. Each show is a unique experience that opens onto the experimental and the interdisciplinary.

Our two intimate and transformable theatre spaces in ÉDIFICE WILDER – Espace danse allow us to ensure that the avant-garde and the alternative scene have a foothold in downtown Montréal.

GETTING TO TANGENTE



Where Is Tangente Located?

Tangente's address is 1435, rue De Bleury, in Montréal. It is located between Mayor and Sainte-Catherine West streets. You may enter this address on a GPS navigator or click the following link to open it on Google Maps: <https://maps.app.goo.gl/an45YDUD6geAhwwRA>

- A lowered sidewalk curb is located on the corner of Mayor and De Bleury.
- There is an automatic door on the far right of the entrance. It is identified with a round, black and yellow sign.

Click on the following link to view the building's entrance:

<https://maps.app.goo.gl/qeHMiTuwfPSgmt57>

If You Are Coming Using Paratransit

You will enter the building via the main entrance, located at **1435, rue De Bleury**, where there is a designated parking area and an automatic door.

You can find more information, as well as book paratransit, on the STM website or by clicking on the following link:

<https://www.stm.info/en/para>

To ensure that you will have a paratransit bus available on the day of the performance, we advise that you book your space at least 3 weeks before the performance.

If You Are Coming Via Public Transit

MÉTRO

The closest Métro station is **Place-des-Arts**, located on the Green line. The closest exit to ÉDIFICE WILDER is Exit C (sortie C). From there, it is a 1-minute walk to Tangente. Please note that dogs are not allowed at this exit.

There are two main exits:

- **Exit C** – 1520, rue De Bleury, H3A 2J2 (dogs are not allowed at this exit). It is located in front of Tangente/ÉDIFICE WILDER.
- **Exit D** – 2020, rue De Bleury, H3A 2J3 (elevator access)

BUS

- De Bleury Street > Bus line number 465, De Bleury/Mayor Stop (1-minute walk)
- President-Kennedy Avenue > Bus line numbers 35 and 125, Station Place-des-Arts Stop (1-minute walk)
- De Bleury Street > Bus line numbers 80, 129, 365, and 480, De Bleury/Sainte-Catherine Stop (1-minute walk)
- De Bleury Street > Bus line numbers 15 and 125, Station Place-des-Arts Stop (1-minute walk)
- Sherbrooke Street > Bus line numbers 24 and 356, Sherbrooke/De Bleury Stop (5-minute walk)

TAXI

A list of taxis is available at the front desk. Security staff can call a taxi for you. A taxi stand is located a 9-minute walk from ÉDIFICE WILDE – Espace danse at the corner of 360 Saint-Antoine Ouest and rue Saint-Pierre (southwest of the intersection).

IF YOU ARE DRIVING

Payed parking can be found at:

- **Îlot Balmoral**, 335 Mayor Street, Montréal QC H3A 2H7
Fees: \$7,50 for 91–120 minutes; \$15,00 over 121 minutes.
- **Place des Arts Parking Lot**, 1450 Saint-Urbain Street, Montréal, QC H2X 3X5

Fees and Business hours:

<https://placedesarts.com/en/plan-your-visit/indoor-parking>

INSIDE THE BUILDING

Main Entrance

After going through the first door, you will be inside a vestibule. There, you will find 4 doors: 3 on the left and 1 on the right. The left doors lead to the main hall; the right door leads to the box office. The main hall is a wide and long common area. It can be loud and crowded, but the members of the Tangente front-of-house team will be there to guide you. They will be able to direct you towards:

- the performance space
- the washrooms
- the café-bar
- the coat check



OR

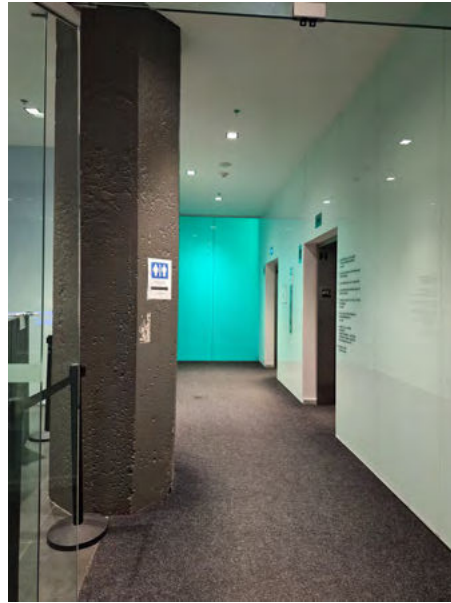


View of the vestibule. To reach the main hall, use the left doors (the right door is automatic).

If you need to pick up your tickets from the box office, use the right door. This door is not automatic.



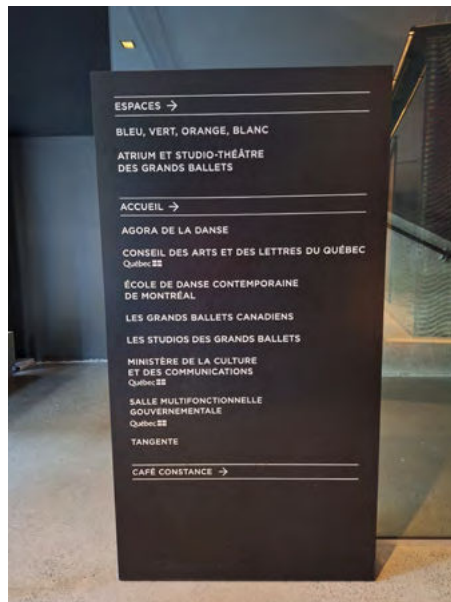
The main hall.



The elevators are located on the left, at the end of the corridor.



The staircase to reach Espace Orange is located on your immediate left, once in the main hall.



There are signs to guide you.



Box Office

You can buy or pick up your tickets at the box office.

An usher will be able to guide you to the performance space, where your ticket will be scanned.

There is also a counter at the box office, where you can pick up your tickets.

Tangente's Front-of-House Team

Ushers from the front-of-house team will be available to assist you and answer any question you may have. They will be dressed in black, with a black t-shirt on which the words "Agora/Tangente" appear. They can help you get your tickets and find a seat in the performance space. If you wish for a specific seat, please do not hesitate to request it.



The usher will be wearing a black t-shirt with the words "Agora/Tangente" printed on the front and "Accueil" on the back.

The Café-Bar

The café-bar is located on the 1st floor. You can reach it via the main entrance, by using the staircase located on the left side or via the elevators, located at the end of the corridor, on the left, in front of the security desk. Make a slight left after leaving the elevator before heading straight. Mind the central beam when exiting the elevator.

The café-bar opens an hour before performance and remains open up to four hours after the beginning of the performance. If need be, you can come and rest there throughout the performance.



Espace Orange

Espace Orange is located on the 1st floor. You can get there by using the main hall's staircase or the elevators.



ENTERING THE PERFORMANCE SPACE

You may enter the performance space through the doors located at the end of the café-bar. Once at the doors, your ticket will be scanned by the ushers before you can go and take your seat.

INSIDE ESPACE ORANGE

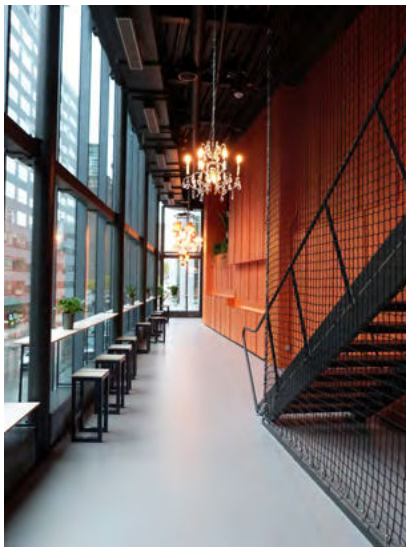
Inside the performance hall, you will notice that seats do not have numbers. Please note that the seating arrangement may be different than the one presented here. Furthermore, certain performances may only have limited seating, thus allowing audience members to freely move throughout for the duration of the performance.



- Espace Orange has a maximum seating capacity of 168 people.
- Please contact the box office ahead of time if you wish to book a specific seat. Otherwise, if need be, ushers may help you find a seat that suits your needs.

THE PASSAGEWAY

The passageway is L-shaped and runs along Espace Orange. There, you may walk about, with a drink or a bite to eat. At the end of the passageway, you will find an entrance leading into Espace Orange. Note that you may have to go via the passageway in order to get to the performance space, where your ticket will be scanned.



Passageway © Vanessa Fortin



Passageway © David Kirouac

Washrooms and Coat Check—1st Floor

Washrooms can be found on the 1st floor. There are 2 drinking fountains (each at a different height) next to the washroom door. The washrooms are gendered: the men's washroom is located on the left and the women's is on the right. Signs identifying the washrooms can be found on the doors.



- In the women's washroom, there are 9 stalls, including one accessible for people with reduced mobility. All doors can be locked, except the door of the 1st stall, as the lock is currently broken. There are 4 sinks.
- In the men's washroom, there are 2 stalls, including one accessible for people with reduced mobility, as well as 3 urinals. All stalls can be locked. There are 3 sinks.
- Please note that the washroom doors are not automatic.

To get to the washroom from the ground floor, you must take the elevators, which can be found at the end of the corridor, on the left, in front of the security desk. Once inside the elevator, simply press the button for the 1st floor. Once you have exited the elevator, you must go left. The washrooms are located 10 metres away from the elevators.

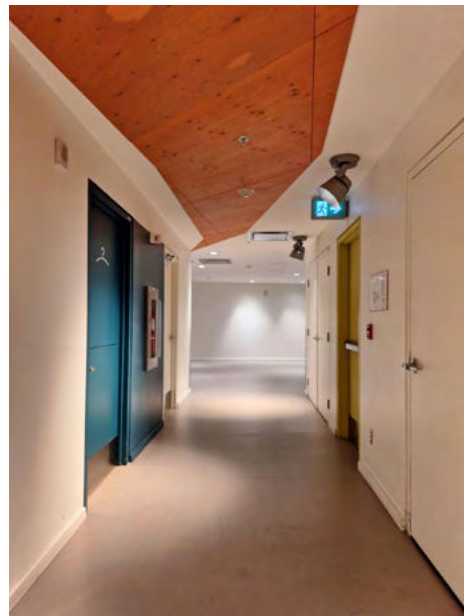
To reach the washrooms from the café-bar, you must exit using the door located in front of the performance space's entrance doors. The washrooms can be reached by taking a slight right and going past the column.

A free coat check service is available before, during, and after the performance. An employee is always present to keep an eye on everyone's belongings.



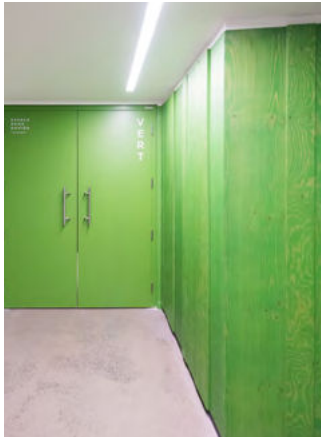
You can get to the coat check by exiting the café-bar and turning left.

From the elevator, you must first make a left before following the signs pointing you to the coat check, just as you would if you were going to Espace Orange. The coat check will then be located on your right in the corridor that leads to the performance space.



Espace Vert

Espace Vert is located in the basement. You can get there by using the elevator (press the SS button) or by using the staircase located on the right-hand side, at the end of the main hall.



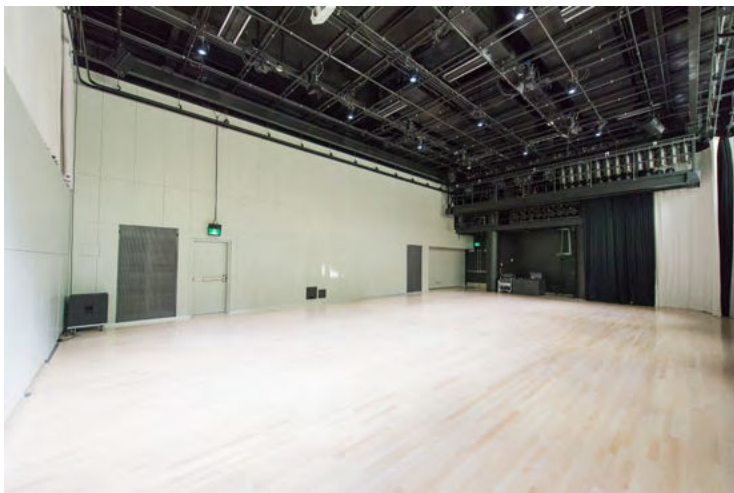
Doors of l'Espace Vert © David Kirouac

ENTRANCE TO THE PERFORMANCE SPACE

You can enter the performance space by using the doors located at the end of the corridor and to the right. The usher will scan your ticket before you go through the doors.

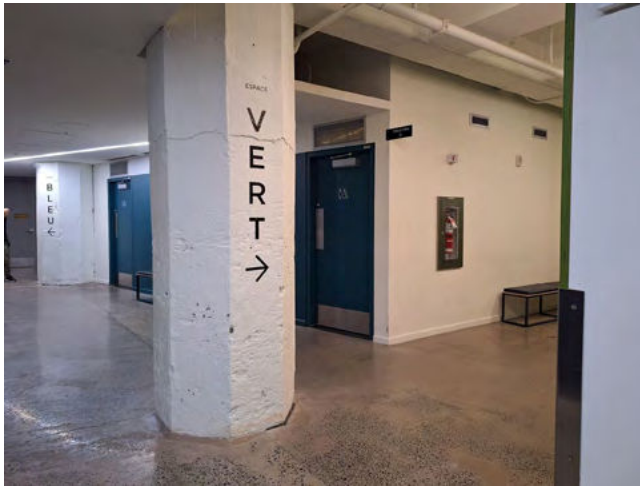
INSIDE ESPACE VERT

Inside Espace Vert, you will notice that the seats do not have numbers. Please note that the seating arrangement may be different than the one presented here. Furthermore, certain performances may only have limited seating, thus allowing audience members to move freely throughout the duration of the performance.



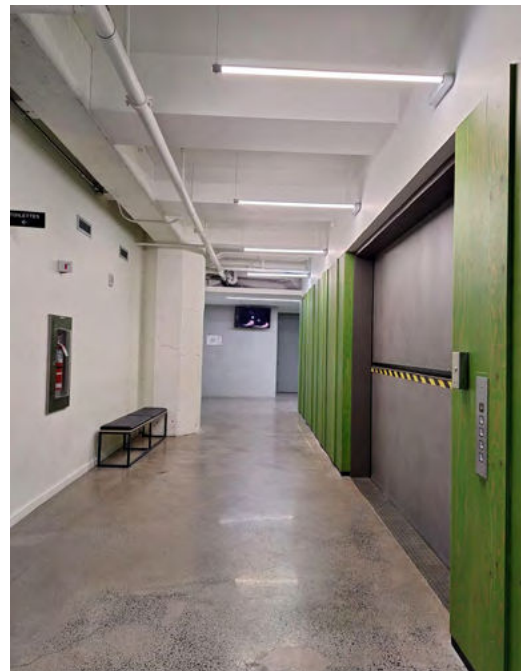
Inside l'Espace Vert © David Kirouac

- Espace Vert has a maximum seating capacity of 67 people.
- Please contact the box office ahead of time if you wish to book a specific seat. Otherwise, if need be, ushers can help you find a seat that suits your needs.



You can get to Espace Vert by using the elevators. Once you are on the basement level, exit the elevator and make a left. You will then find a column on which an arrow and the word "VERT" appear. Following the direction of the arrow will lead you to a corridor.

Espace Vert is located at the end of the corridor, to the right. Along the corridor, you will find 2 benches where you can sit while waiting for the doors to be open.

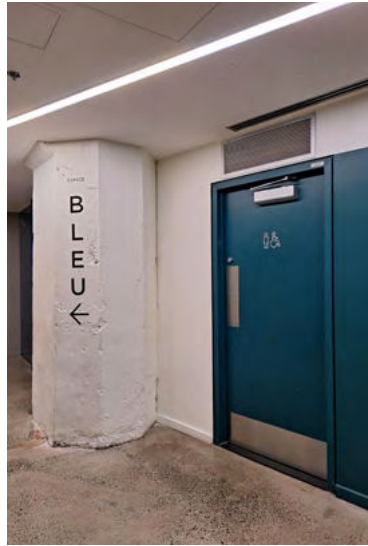


Basement Washrooms

The washrooms are gendered and can be found by making a left after exiting the elevator. Please note that the washroom doors are not automatic. The women's washroom is located on the right.



In the women's washroom, there are 4 stalls, including one accessible stall for people with reduced mobility. All stall doors can be locked. There are 3 sinks.



The men's washroom is located on the left. In it, there is one stall that is accessible to people with reduced mobility, as well as 2 urinals. The stall door can be locked. There is one sink.



There are 2 drinking fountains (each at a different height) across from the washrooms.

If you have any questions or comments,
don't hesitate to call the box office at 514-525-1500
or write to billetterie@tangentedanse.ca.