

ICONIC + MON HOROSCOPE ME TROUVE LAIDE

SHOW GUIDE

RELAXED PERFORMANCE ON SUNDAY,
JANUARY 21, 2024



Karin Hazle, JorDen Tyson, Meg Ohsada,
Alicia Morrison, Kathy M. Austin in *Iconic*

© Pipehouse



Raphaëlle Renucci and Mathieu Hérard
in *Mon horoscope me trouve laide*

© Josée Lecompte

Tangente is proud to offer a performance that is open to all, including persons with disabilities, anxiety disorders, or just anyone who struggles in traditional theatre spaces.

To better accommodate people with specific needs, the relaxed performance is more tolerant of noise and movement. The audience may—and is in fact welcome to—speak, react, and move during the show.

How long is the show?

The show starts at 4pm on Sunday, January 21.

The total length of the show is 1 hour and 40 minutes. Doors open 20 minutes before the show starts.

- First performance, *Iconic*: 35 minutes
- 20-minute intermission. The audience is free to stay in or leave the theatre as needed.
- Second performance, *Mon horoscope me trouve laide*: 30 minutes

Even though the theatre has numbered seating, you can disregard it and sit wherever you like.

There will be an usher by the theatre door and another up the stairs, in the back, by the control booth in case you need anything during the show.



How has the show been adapted?

To make the show more accessible, we made several adjustments:

- An announcement will be made and explanations will be given at the beginning of the show.
- House lights are adjusted so that the venue is never fully dark.
- Doors remain open so that guests can enter and leave the audience space throughout the event, as needed.
- Sound is adjusted to a lower level and earplugs are available for increased comfort.
- Guests can vocalize or move throughout the audience space.
- Guests can stay in the theatre or leave it during the 20-minute intermission.
- Lighting does not include strobe or flash.
- Latecomers are admitted.
- More staff is on hand to guide you during and after the performance.
- A chill-out space is available in the passageway for guests to take a break and rejoin the performance when ready.
- Quiet music is played in the café-bar before and after the show.
- A creative audio description of Iconic is a part of the show in English only. A French translation is available in large print for those accompanying audience members who have low vision or blindness.

QUIET SPACE

If you need a break during the show, you can use the quiet space in the walkway. It will be equipped with

- tables and crayons for colouring
- cushions and beanbags to relax on
- various fidget toys to help you decompress
- free snacks at the café-bar.



Iconic (35 minutes)

ABOUT THE SHOW

Iconic is a disability-led dance-based performance created by the National accessArts Centre dance ensemble. Expressed as a collection of solos, duos and group work, *Iconic* incorporates a wide range of dance, performance styles, individual expression, and collaboration driven by the ensemble's personal vernacular and lived experience. Through movement, visual art, audio, and conversation, *Iconic* explores concepts of love, loss, independence, relationships, and alter egos. Rooted in improvisation, this ground-breaking work creates a spectacle that is accessible to both artists and audiences.



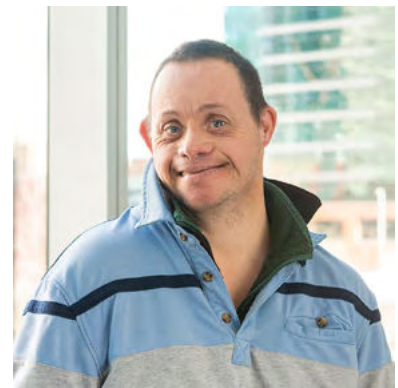
Alicia Morrison

© Cassandra Ng



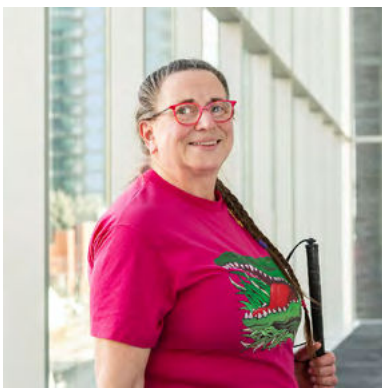
Hank «Dommix» Round

© Cassandra Ng



James Silcock

© Cassandra Ng



Kathy M. Austin

© Cassandra Ng



Meg Ohsada

© Cassandra Ng

ARTISTS ON STAGE

- **Alicia Morrison**, Choreography and performance
- **Hank « Dommix » Round**, Choreography and performance
- **James Silcock**, Choreography and performance
- **Kathy M. Austin**, Choreography and performance
- **Meg Oshada**, Choreography and performance

TECHNICAL TEAM

- **Ashley Brodeur**, Management, performing arts and rehearsal support
- **Chawna Exner**, Rehearsal support
- **Cassiopeia Holmes**, Technical translation

TO CONSIDER

A creative audio description of *Iconic* is a part of the show in English only. A French translation is available in large print for those accompanying audience members who have low vision or blindness.

SOUND EFFECTS

- Music
- Spoken voice in English

VISUAL EFFECTS

- Text projection on the wall at the back of the stage



Mon horoscope me trouve laide (30 minutes)

ABOUT THE SHOW

An homage to lip sync, *Mon horoscope me trouve laide* explores the absurdity and poetry of using the voice of another person. Everything is possible through the magic of dubbing: caricaturing someone else's traits, gaining confidence through another's words, changing by taking on a personality that isn't ours. With this parody that might at first appear artificial, this duo exposes the reality of our everyday lives stuffed with popular references.



Mathieu Hérard

© Josée Lecompte



Raphaëlle Renucci

© Stéphanie Brochard

ARTISTS ON STAGE

- **Mathieu Hérard**, Choreography and performance
- **Raphaëlle Renucci**, Performance and creative collaboration

TECHNICAL TEAM

- **Manon Pocq Saint Joan**, Lighting design

SOUND

- Singing
- Interactions with the audience
- Occasional high-pitched vocals
- Popular music in French and English

VISUALS

- Video projection
- Visual contact with the audience
- Use of lighting effects
- Smoke

WHEN THE SHOW IS OVER

At the end of the show, there may be a lot of people in the café-bar, as everyone can leave at the same time. You can wait for the crowd to exit the theatre before leaving the premises. Feel free to ask the ushers to show you the way.



THE TANGENTE TEAM



Stéphane Labbé
Executive Director and
International Projects Curator



Jaleesa Coligny
Curator



Marco Pronovost
Curator



**Laurane
Van Branteghem**
Curator and Programming
Coordinator



Sylvain Verstricht
Communications Director



Laurence Rosset
Communications and Social
Media Coordinator



Julie Deschênes
Production Manager and General
Director Adjunct



Martin Bisson
Technical Director in Charge of
Infrastructures and Rentals



France St-Jean
Venue Manager



Richard Houle
Technical Director



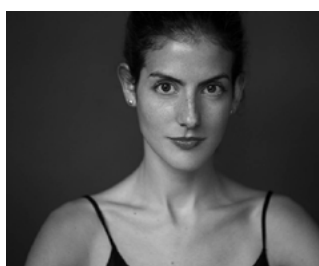
Samantha Doiron
Technical Assistant and
Stage Manager



Etelle Brabant
Technical Assistant and Stage
Manager



Pier DuFour
Administrative Director



Morgane Guillou
Cultural Mediation Coordinator
and Assistant to the Executive
Director



Jeremy Saya
Box Office Manager



Johanna Simon
Box Office Assistant



**The entire Tangente team wishes you a lovely visit.
Enjoy the show!**

If you have any questions or comments,
don't hesitate to call the box office at 514-525-1500
or write to billetterie@tangentedanse.ca.

